

Extended Range 1231km Voyah Dreamer PHEV MPV Chinese EV Car 0-100km/H 5.9s

Our Product Introduction

for more products please visit us on electriccars-ev.com

Basic Information

- Place of Origin: China
- Brand Name: Voyah
- Certification: VDA, TUV, ISO
- Model Number: Voyah Dreamer
- Minimum Order Quantity: 1 Unit
- Price: Send a message to get your best price
- Packaging Details: by sea, by trailer, rail via containers, LCL and RO-RO vessel
- Delivery Time: 7-30days
- Payment Terms: L/C, D/A, D/P, T/T, Western Union, MoneyGram
- Supply Ability: 1-10 units 15 - 20 working days, 10-30 units 20-30 working days, 30-50 units ≥30 working days

R-CHENG

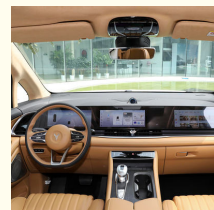


Product Specification

- Color: Black, white, silver, purple
- Length*Width*Height: 5315x1985x1800
- Type: MPV
- Fuel: Extended EV
- Range: 1231 Km
- Torque (N.m): 200+610
- 0-100km/h Acceleration (s): 5.9
- Seats: 5 Doors 4 Seats MPV
- Max Speed (km/h): 200
- Door Opening Method: Side Sliding Door
- Highlight: 4seats MPV Chinese EV Car, Voyah Dreamer PHEV, MPV Chinese EV Car 100km/H



More Images



HOT SALES COLOR DISPLAY



Product Description

Extended Range 1231km EV Voyah Dreamer PHEV High Quality MPV 0-100km/H 5.9s China Electric Vehicles Wholesale

Voyah Dreamer is the ultimate luxury electric vehicle, designed to provide the most unparalleled and transformative driving experience. With its sleek and aerodynamic body, the Dreamer cuts a striking figure on the road, while its advanced technology and intelligent features ensure that every journey is a luxurious and enjoyable one. Powered by a high-performance electric motor, the Dreamer accelerates from 0 to 60 mph in an astonishingly fast speed, giving you the thrill of a lifetime. Its battery system is not only powerful but also durable, ensuring a range of over 300 miles on a single charge. With its advanced regenerative braking system, the Dreamer can even harvest energy while braking, extending its range further. Inside, the Dreamer is a masterpiece of modern craftsmanship, with its interior wrapped in the finest leather and equipped with the latest infotainment technology. The driver-oriented cockpit provides a seamless blend of form and function, while its advanced features like the heads-up display and autopilot mode ensure a stress-free and enjoyable ride. The Voyah Dreamer is not just a car; it's a statement of style and a declaration of luxury. It's the perfect choice for those who demand the best and are ready to embrace the future of electric mobility. So, if you're ready to take the road less traveled and experience the ultimate in luxury electric driving, the Voyah Dreamer is just what you're looking for.

Our Product Introduction

L×W×H (mm)	5315x1985x1800
Wheelbase (mm)	3200
Range (km)	1231
Max motor power (KW)	100KW(136Ps)
Max motor torque (N.m)	200+610
Body Structure	5 doors 4 seats MPV
0-100km/h Acceleration (s)	5.9
Max Speed (km/h)	200
Door opening method	Side sliding door
Fuel tank volume (L)	51
Engine	1.5T 136hp L4 plug-in hybrid
Displacement	1.5
Oil type	95#
Number of drive motors	Dual motors
Battery Type	Ternary lithium battery
Battery Brand	CATL
Tyre	255/50 R20
Seats Materials	Leather
Central control screen size (inches)	12.3
Loud Speakers	10
External Cameras	6
Number of ultrasonic radars	12
Number of millimeter wave radars	5

Product Appearance

VOYAH
DREAMER PHEV
Moving castle of dream

1.5T
New hybrid
engine

1231km
Comprehensive
endurance range

5.9s
0-100km/h
acceleration time



★★★★☆

APPEARANCE AESTHETICS

Moving clouds, flowing water



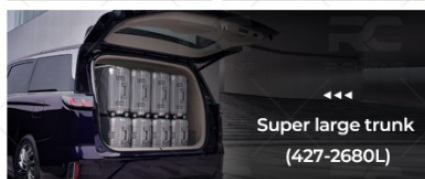
▲▲▲ Ride-the-wind waist line + 20-inch aluminum alloy wheels



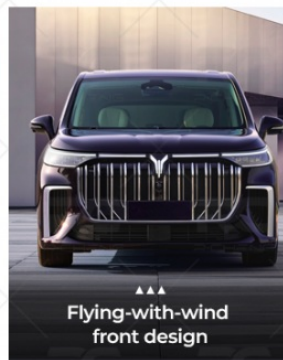
Flying Roc headlights



Bright taillights



▲▲▲ Super large trunk
(427-2680L)



▲▲▲ Flying-with-wind
front design

★★★★☆

PANORAMIC DELUXE COCKPIT

Deep sea quiet immersive enjoyment



▲ Ease to get on and off

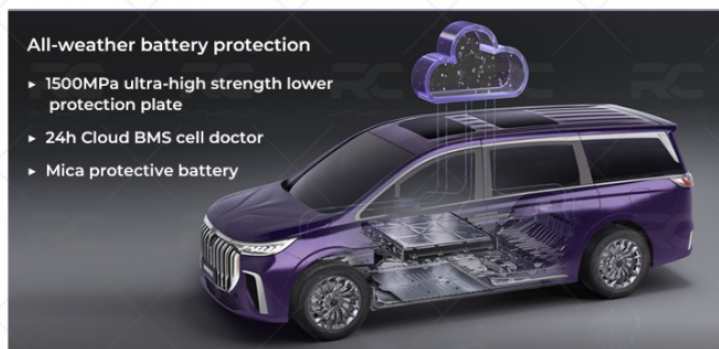


▲ Seven spacious seats

★★★★☆

ALL-ROUND PROTECTION

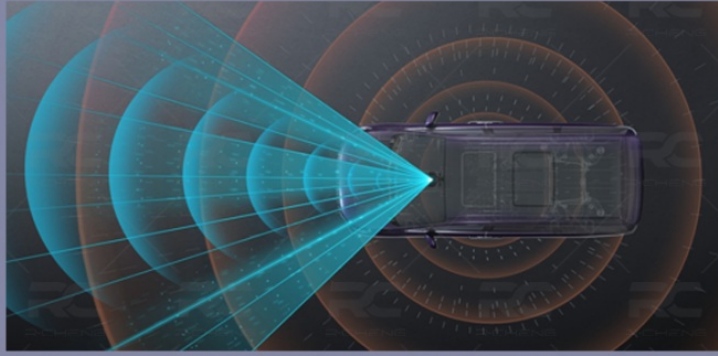
Vehicle protection/Passenger protection/Battery protection



★★★★☆

EXTRASENSORY INTELLIGENCE

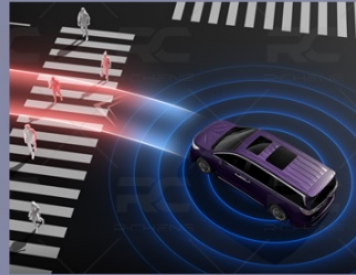
Super intelligent interactive system / L2.5 intelligent driver assistance system



25 intelligent driving assistance functions



APA/RPA full scene parking



ALC Automatic lane changing



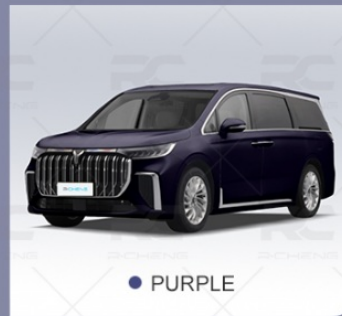
CAR DISPLAY

Enjoy luxury and comfortable cloud castle



► Interiors may vary

HOT SALES COLOR DISPLAY



FAQ

Q: How do I know if my transaction is secured?

A: We have certified by VDA, TUV, ISO.

Q: What is your payment term?

A: We accept L/C, D/A, D/P, T/T, Western Union, MoneyGram.

Q: What competitive advantage do you have?

A: All We Offer Are New Cars Of Official Standard , Any problem can be warranty through official channels.We also have our own advantages in terms of price.I hope we can reach a win-win situation

Q: Your shop does not have the model I need, can you help me find it?

A: Of course, we can find the model you need in China and offer you a good price.

Q:For a large quantity, can you offer a more favorable price?

A :Of course, our goal is to achieve a win-win result, and we can communicate and confirm through email.

Send a message online to get your best price and details of Extended Range 1231km EV Voyah Dreamer PHEV High Quality MPV 0-100km/H 5.9s China Electric Vehicles Wholesale

RUICHENG Chengdu Ruicheng Automobile Service Co., Ltd.

☎ 19158810053 ✉ mango@ruichengauto.com 🌐 electriccars-ev.com

Hall 5, No. 1, Yinhe Road, Damian Street Chengdu City, Sichuan Province, China